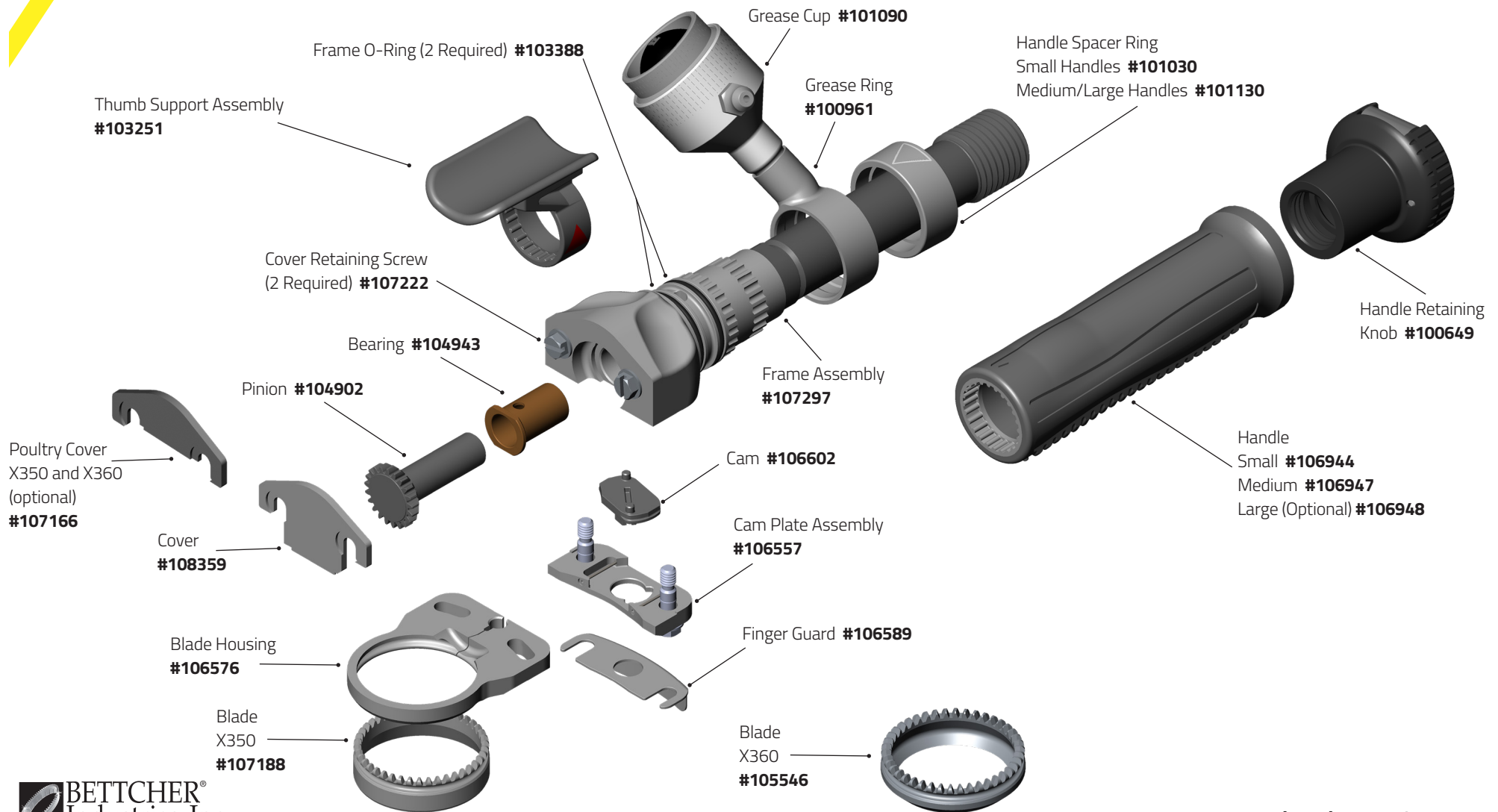
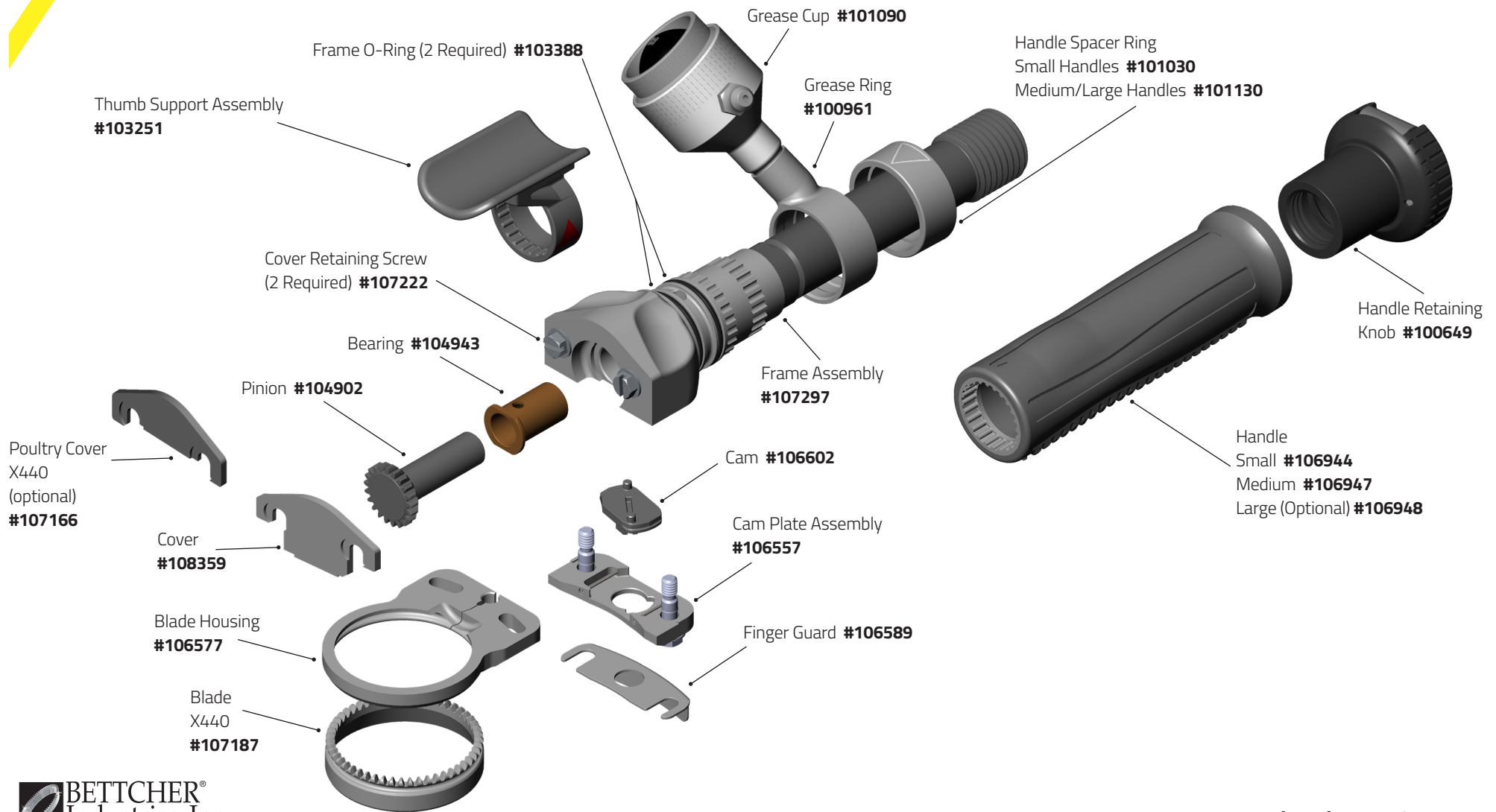


Quantum Flex® X350/X360



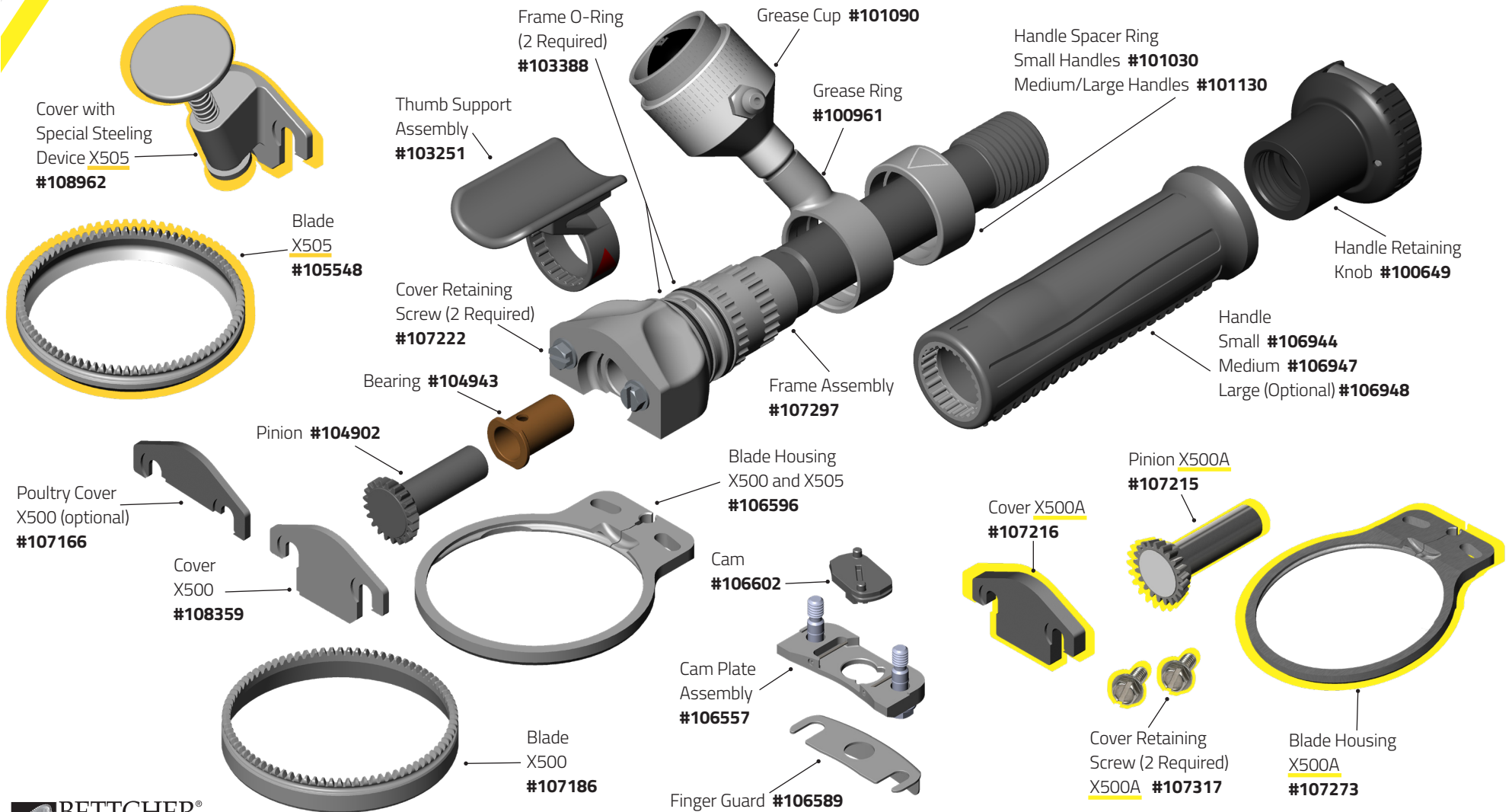


Quantum Flex® X440

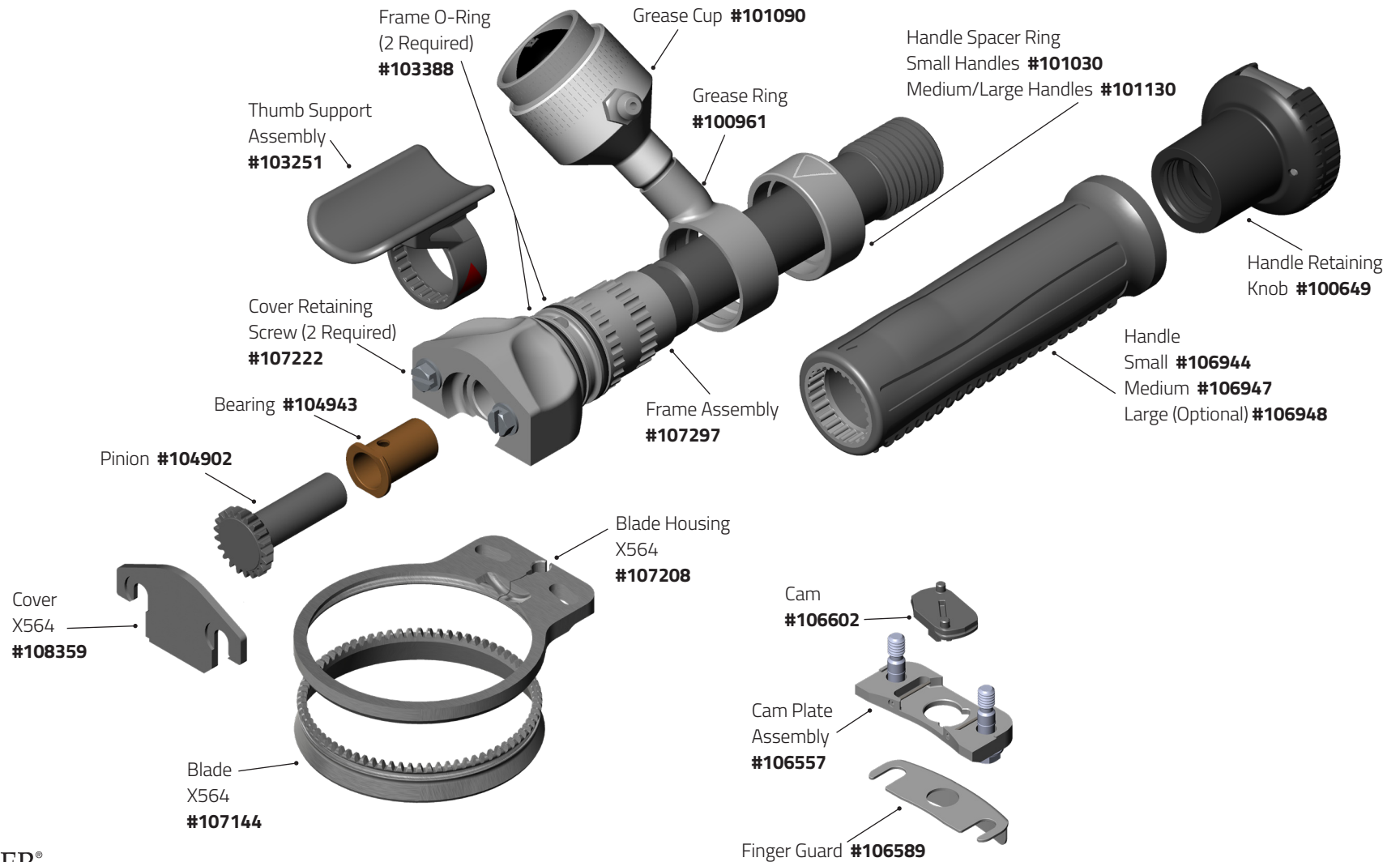




Quantum Flex® X500/X505/ X500A

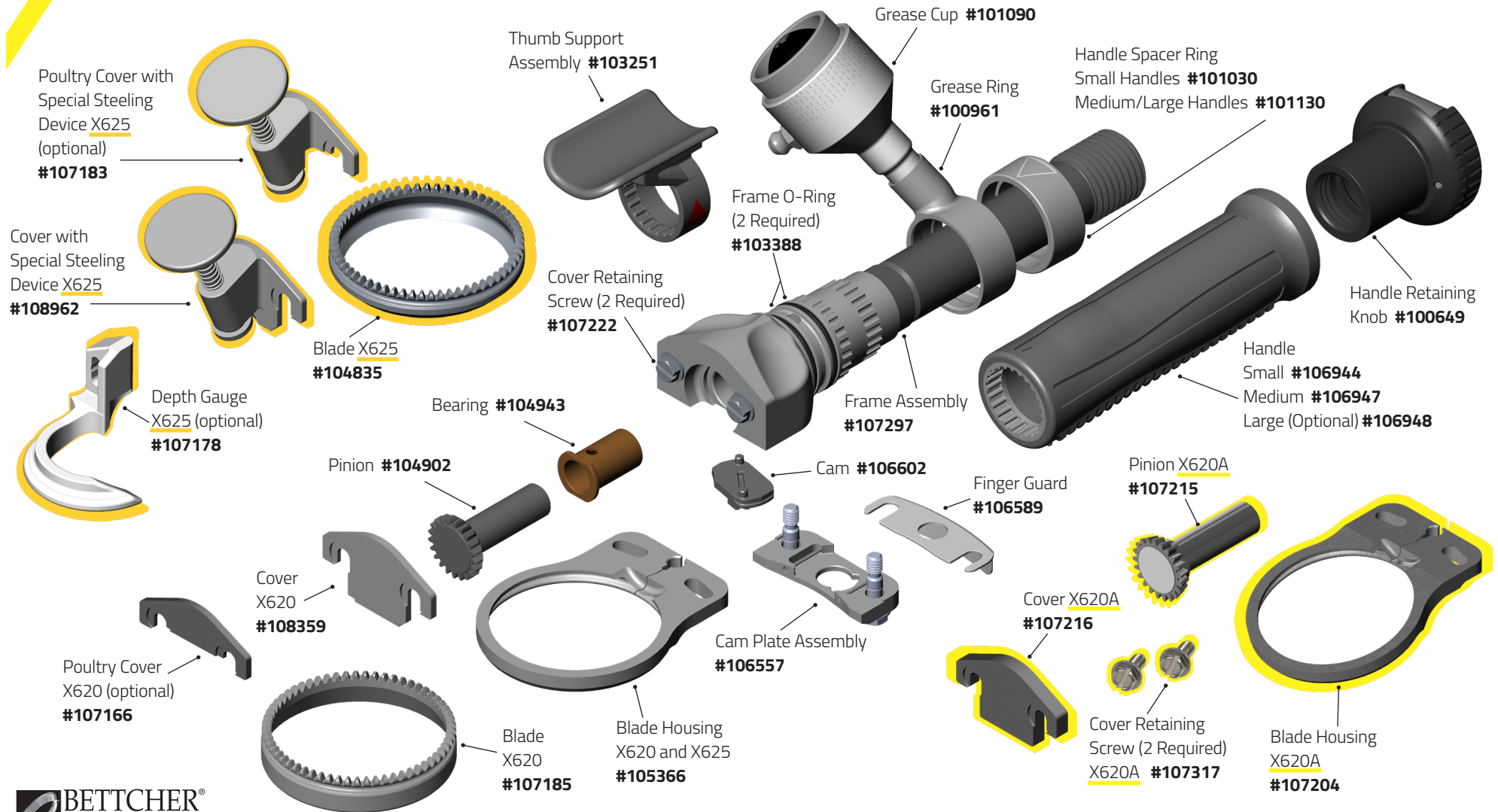


Quantum Flex® X564

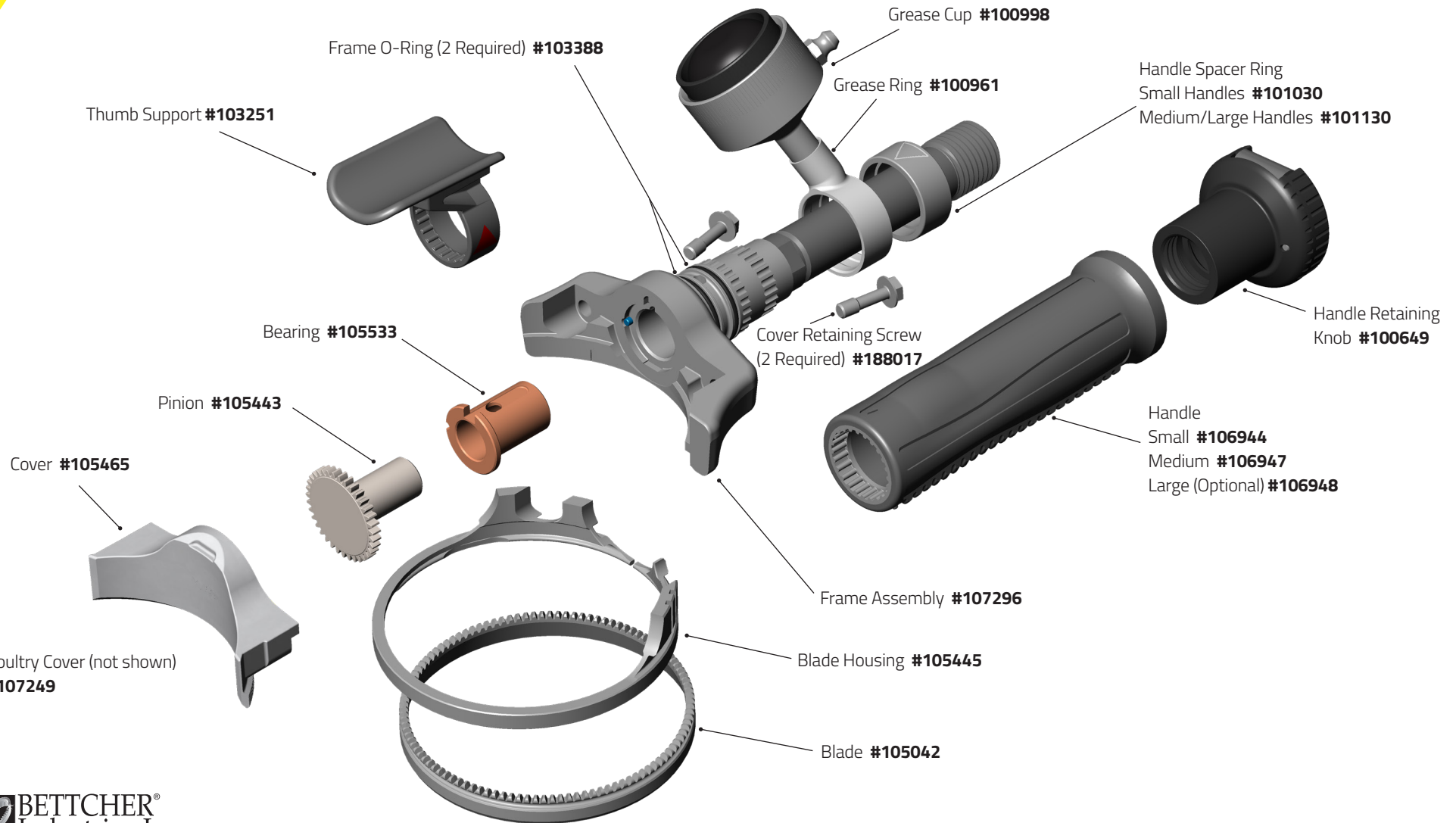




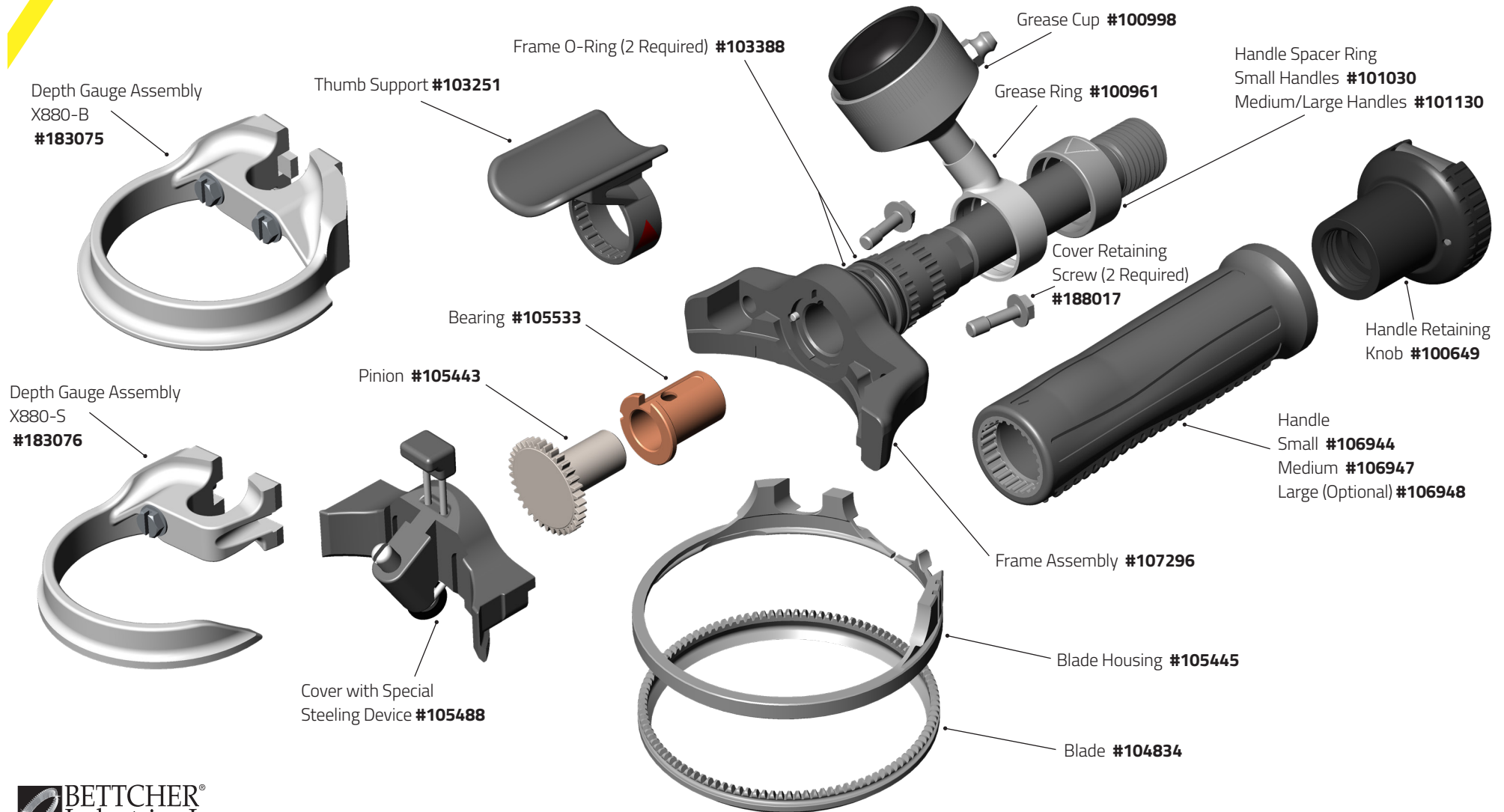
Quantum Flex® X620/X625/ X620A



Quantum Flex® X750

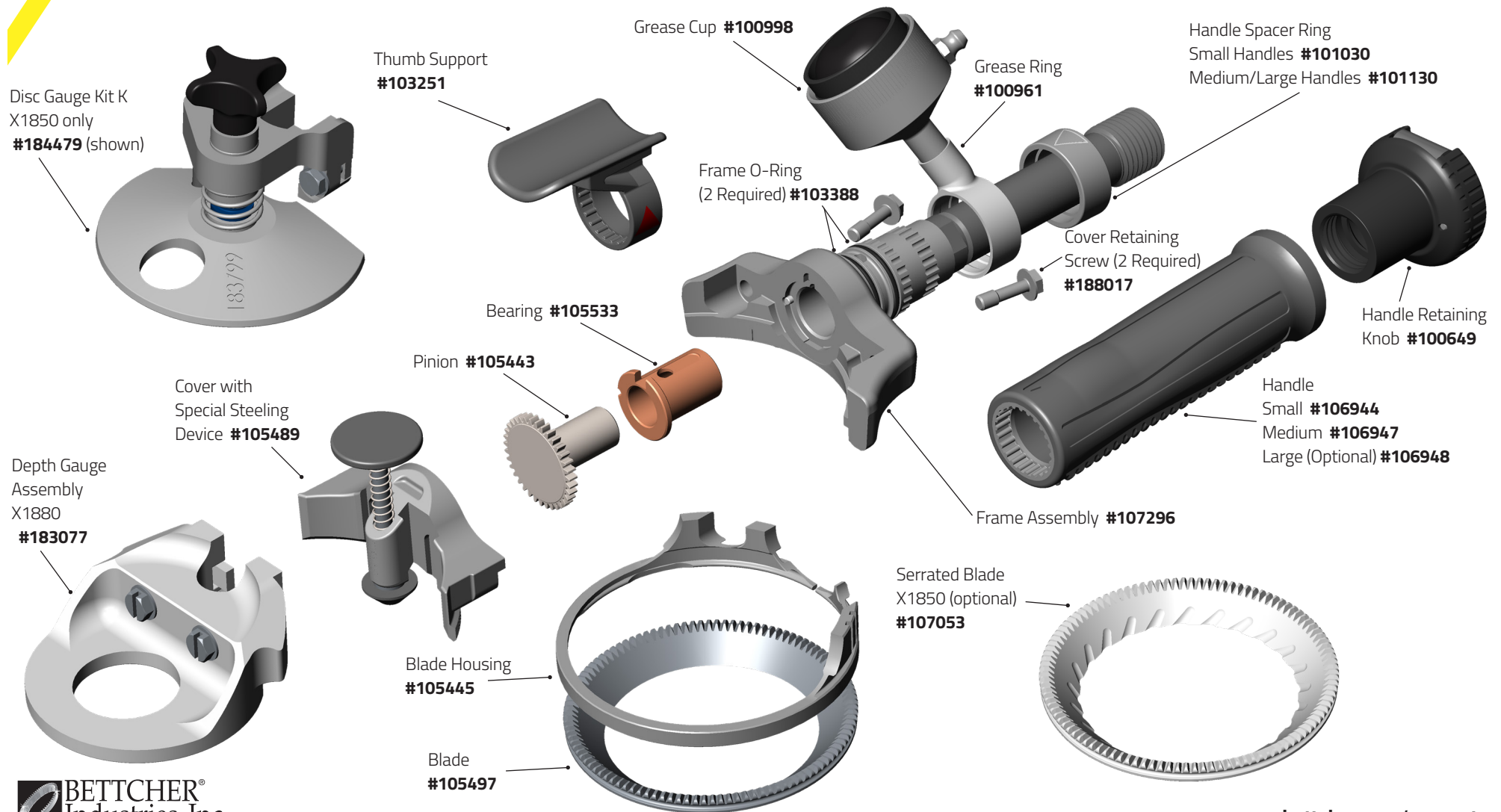


Quantum Flex® X850/X880B & X880S



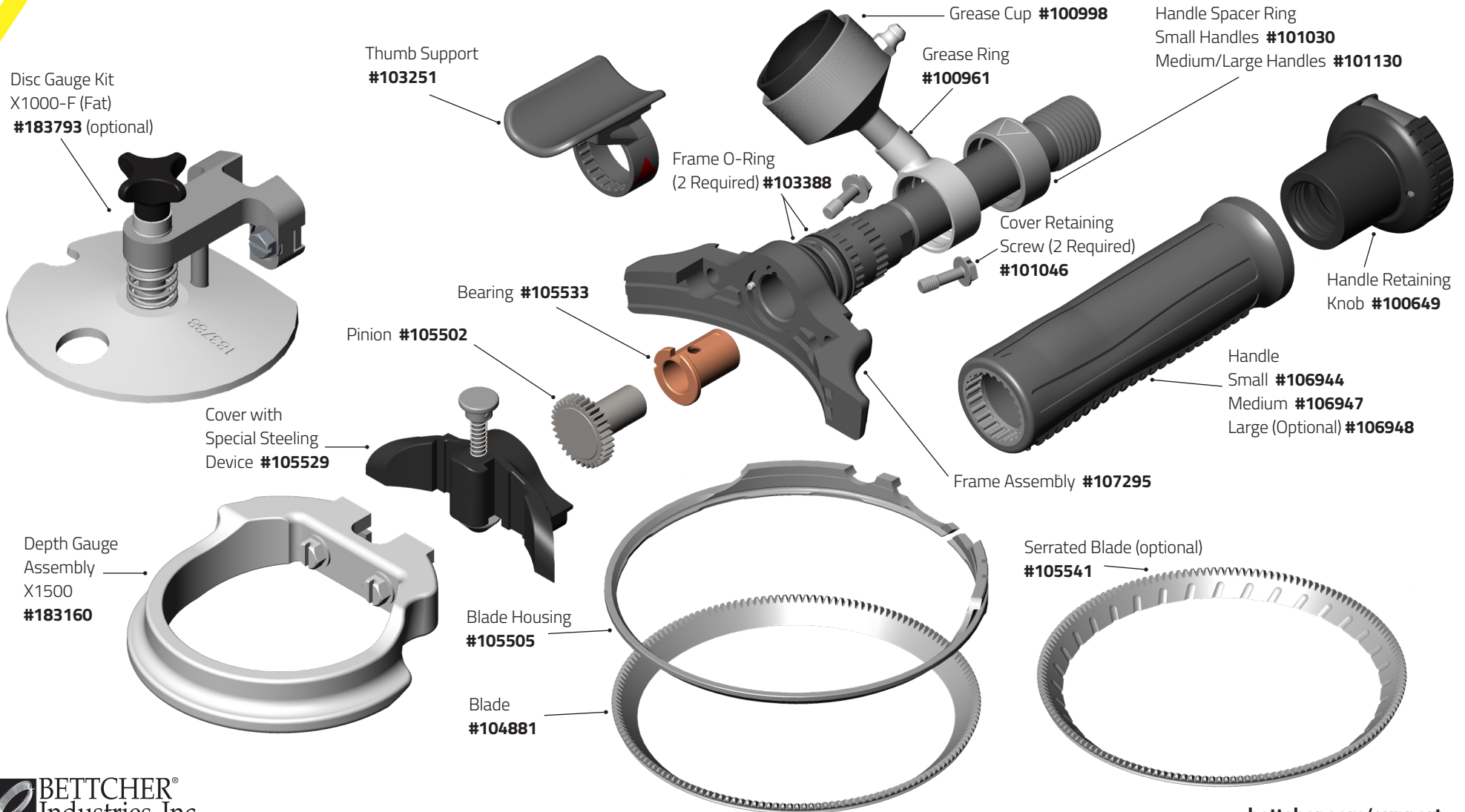


Quantum Flex® X1850/X1880



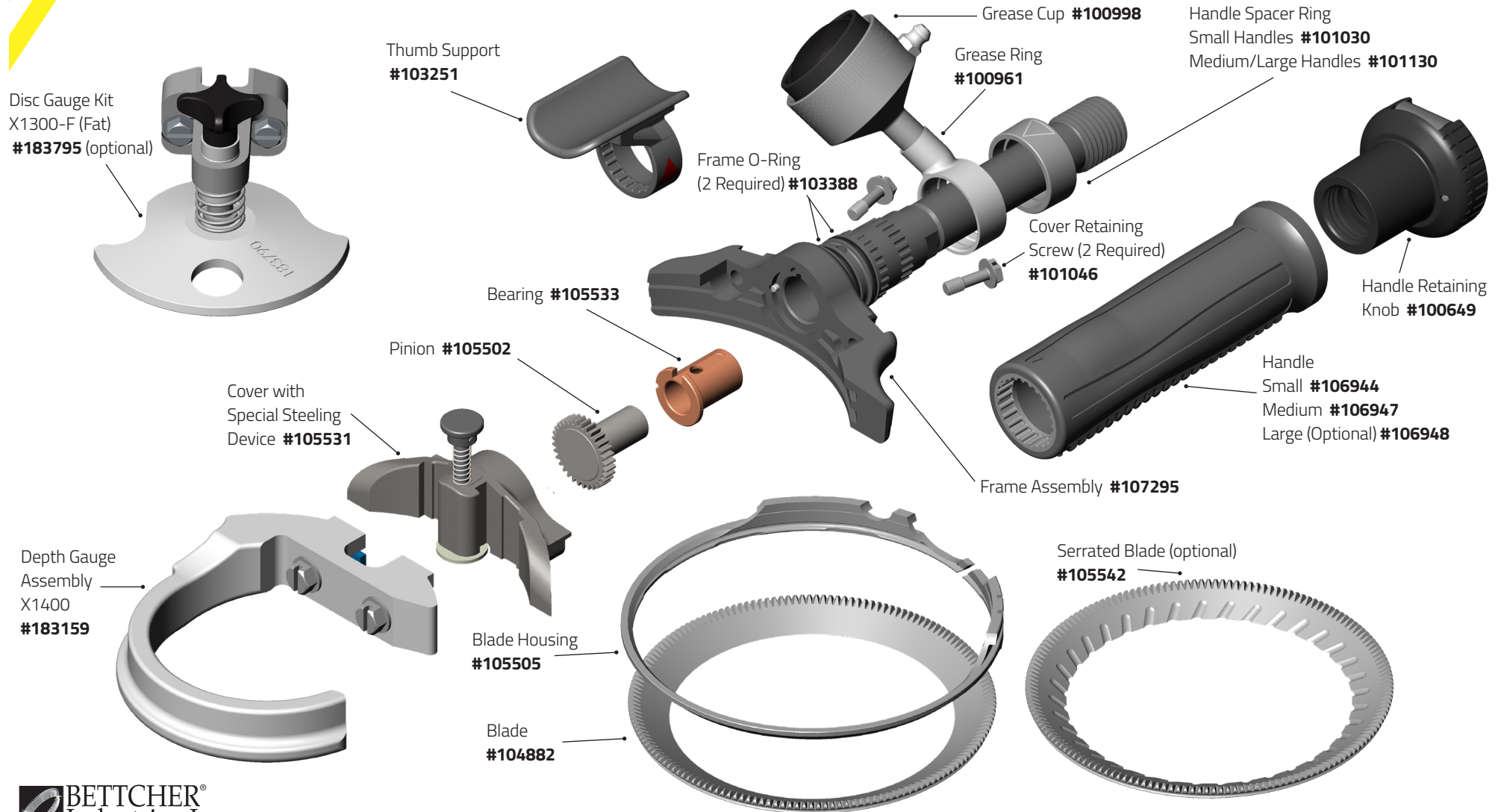


Quantum Flex® X1000/X1500





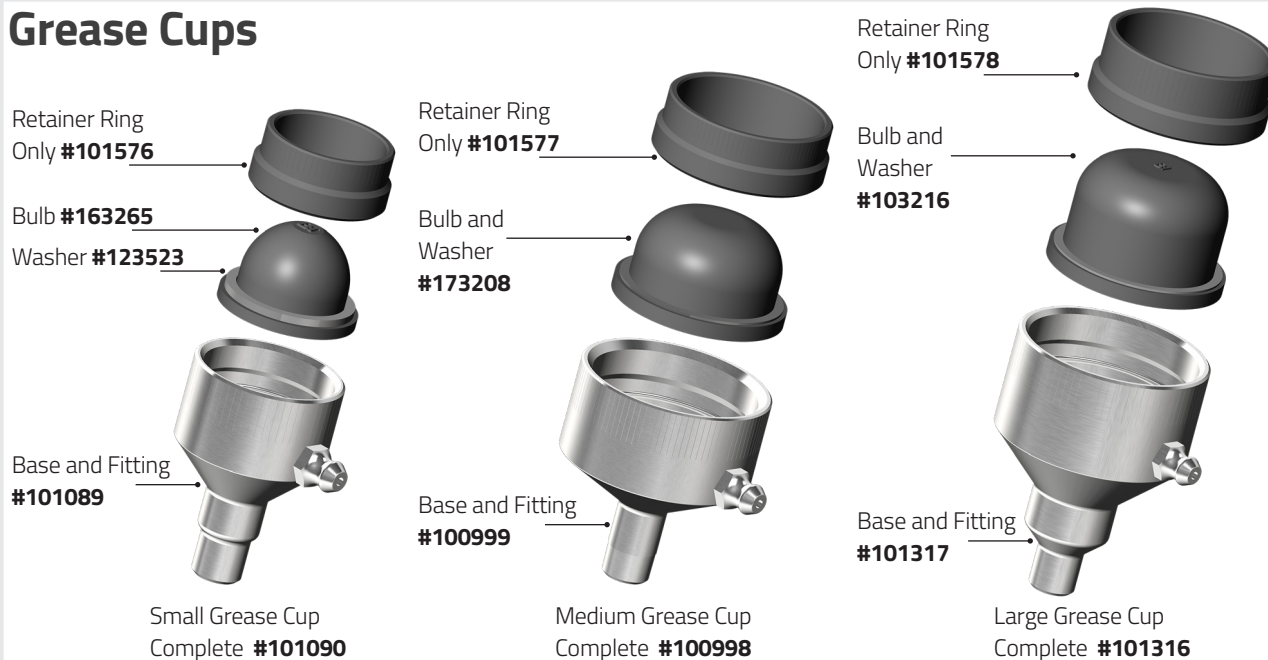
Quantum Flex® X1300/X1400



Quantum Flex® Parts & Accessories

Optional and Replacement Parts

Grease Cups



Whizard® Strap Assembly



Handles (optional)



Handles (optional)

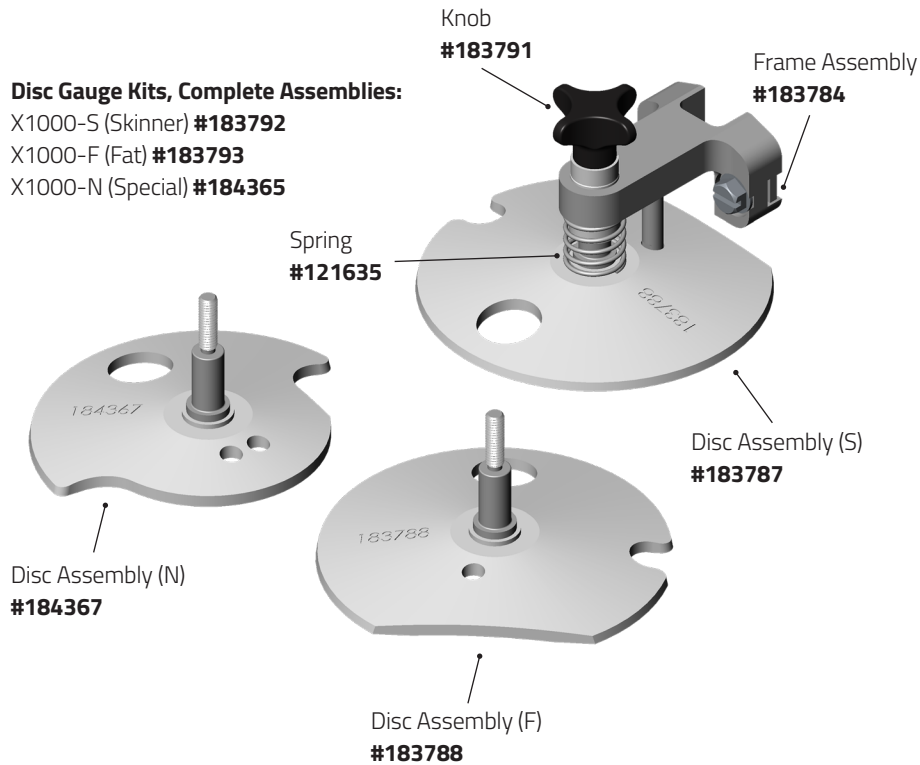


Quantum Flex® Parts & Accessories

Optional and Replacement Parts

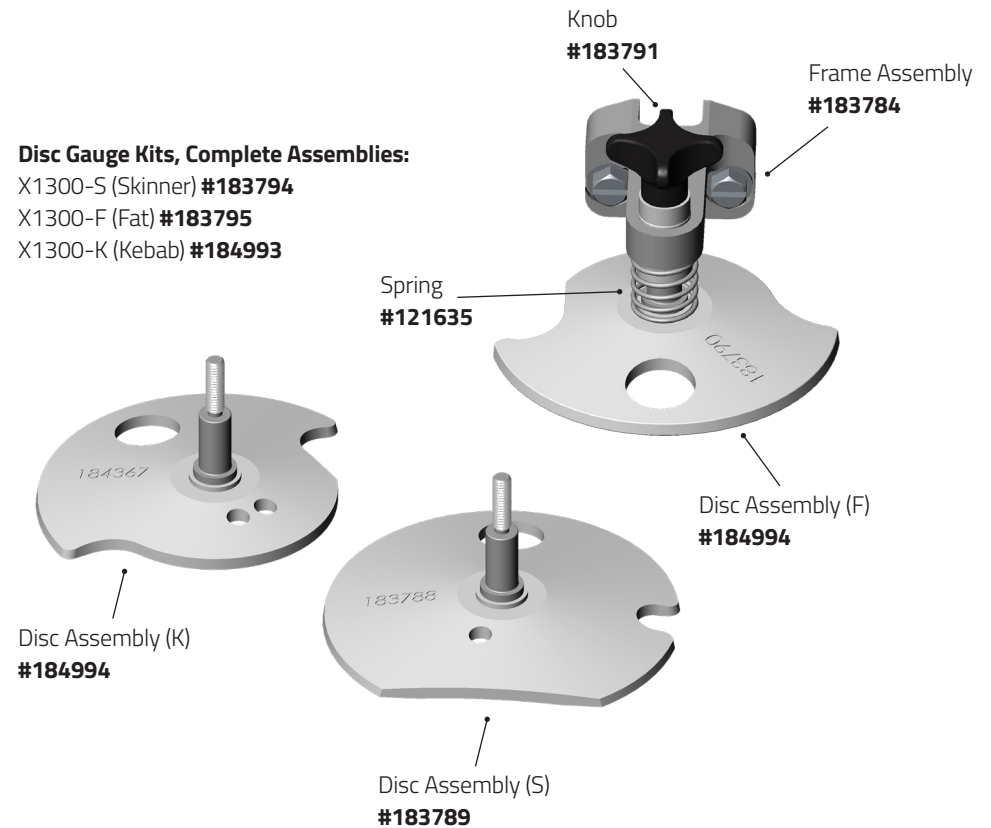
Disc Gauge Kits, Complete Assemblies:

- X1000-S (Skinner) **#183792**
- X1000-F (Fat) **#183793**
- X1000-N (Special) **#184365**



Disc Gauge Kits, Complete Assemblies:

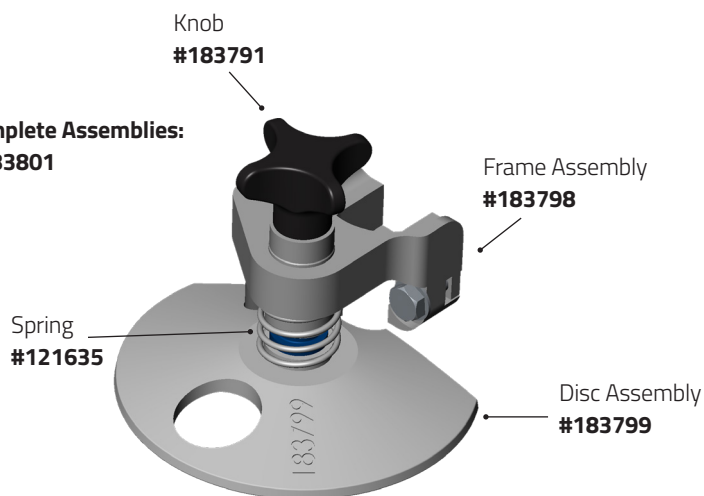
- X1300-S (Skinner) **#183794**
- X1300-F (Fat) **#183795**
- X1300-K (Kebab) **#184993**



Quantum Flex® Parts & Accessories

Optional and Replacement Parts

Disc Gauge Kits, Complete Assemblies:
X850-S (Skinner) **#183801**



Disc Gauge Kits, Complete Assemblies:
X1850-K (Kebab) **#184479**

