



**▶ Driveline Only**

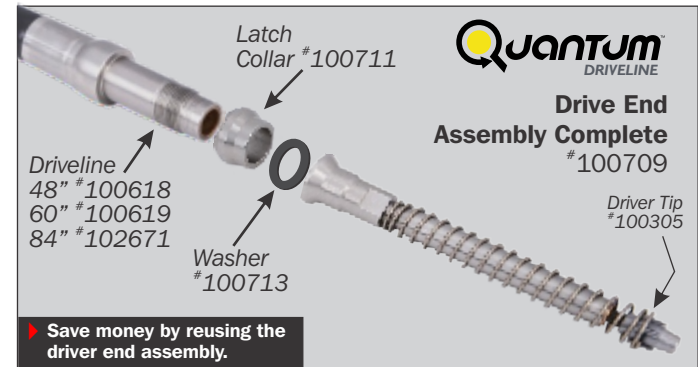
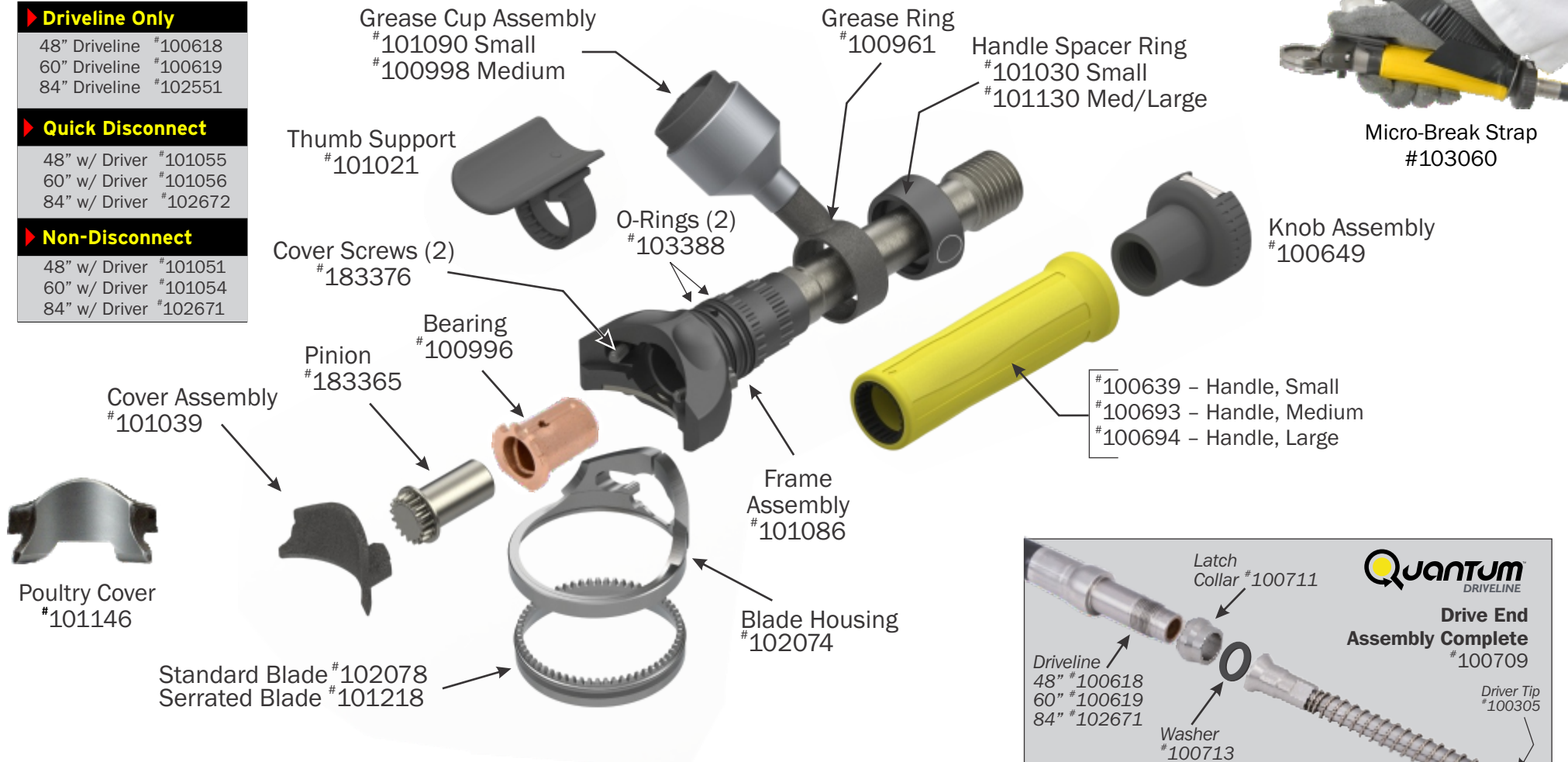
- 48" Driveline #100618
- 60" Driveline #100619
- 84" Driveline #102551

**▶ Quick Disconnect**

- 48" w/ Driver #101055
- 60" w/ Driver #101056
- 84" w/ Driver #102672

**▶ Non-Disconnect**

- 48" w/ Driver #101051
- 60" w/ Driver #101054
- 84" w/ Driver #102671



# Q625 Trimmers



Micro-Break Strap  
 #103060

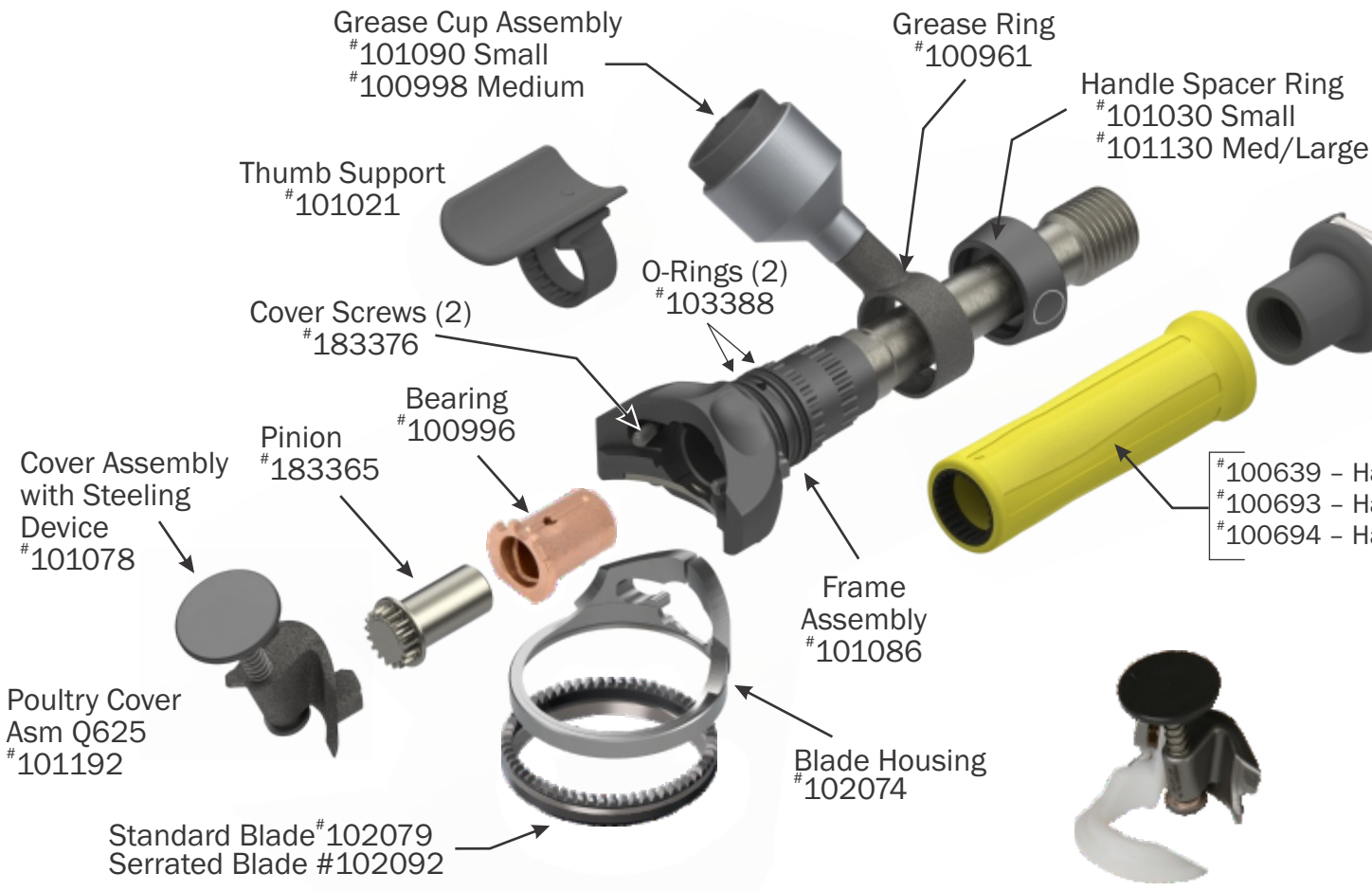
Knob Assembly  
 #100649

#100639 - Handle, Small  
 #100693 - Handle, Medium  
 #100694 - Handle, Large



High Performance Grease  
 #102609 - 13.5 oz / 383 g  
 #102612 - 35 lb / 15,8 kg

Depth Gauge Mounting Cover  
 #101970  
 Depth Gauge #185689



Cover Assembly with Steeling Device  
 #101078

Poultry Cover Asm Q625  
 #101192

Please review Operating Instructions for complete instructions and safety information.

Order: 800-321-8763 | Fax: 440-328-4535 | [quantum@bettcher.com](mailto:quantum@bettcher.com)



**▶ Driveline Only**

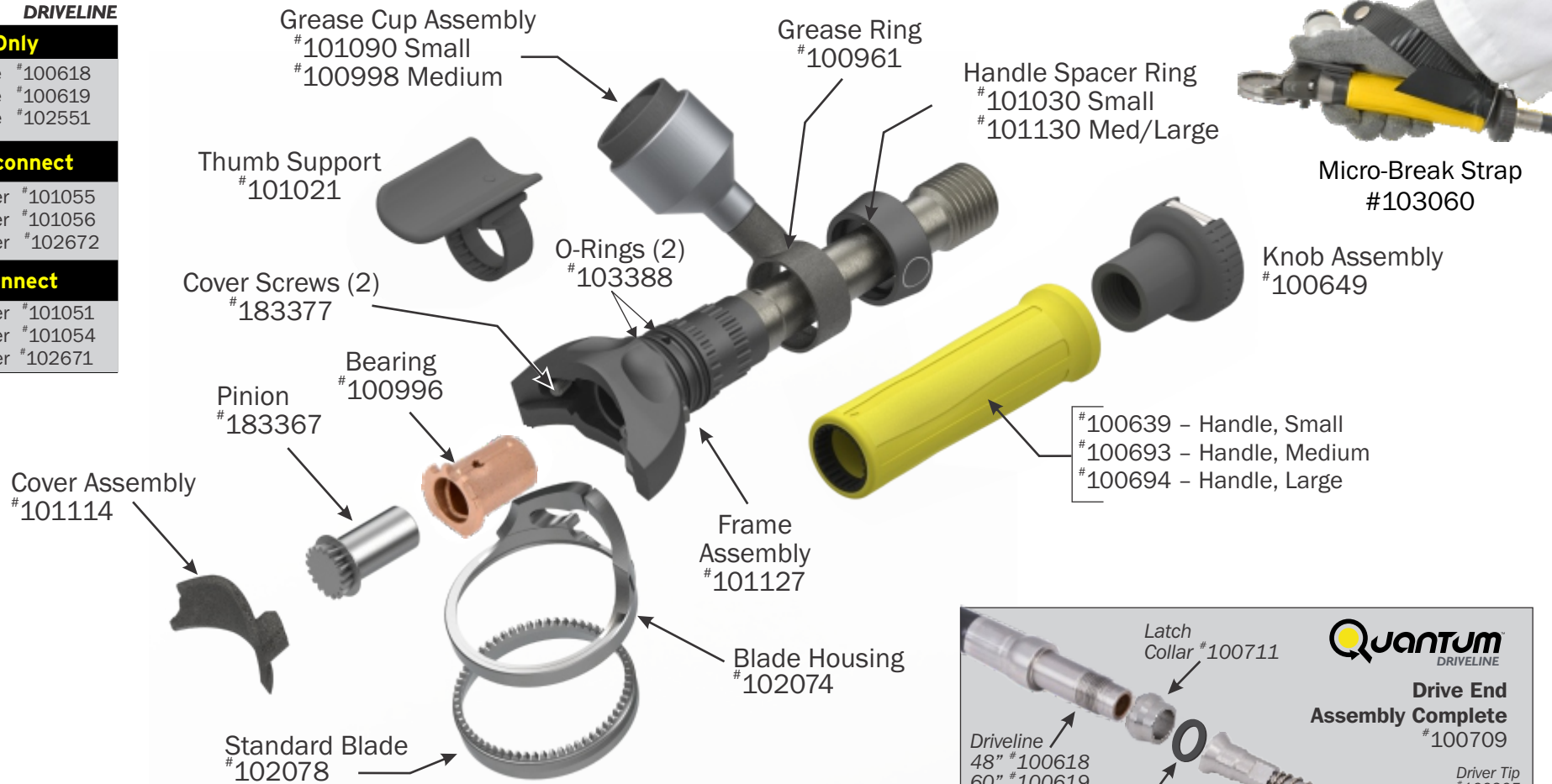
- 48" Driveline #100618
- 60" Driveline #100619
- 84" Driveline #102551

**▶ Quick Disconnect**

- 48" w/ Driver #101055
- 60" w/ Driver #101056
- 84" w/ Driver #102672

**▶ Non-Disconnect**

- 48" w/ Driver #101051
- 60" w/ Driver #101054
- 84" w/ Driver #102671



▶ Save money by reusing the driver end assembly.